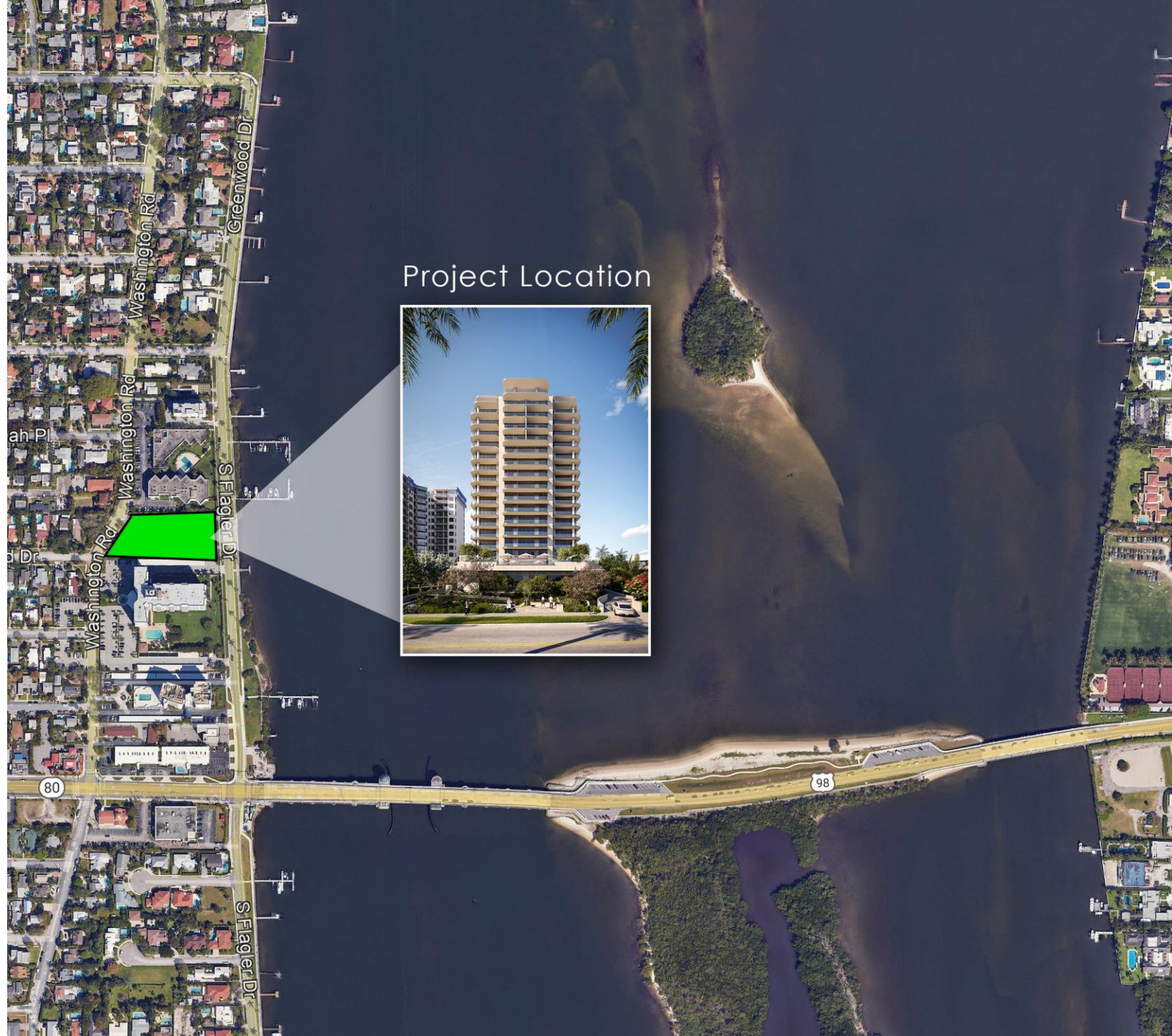




Flagler House

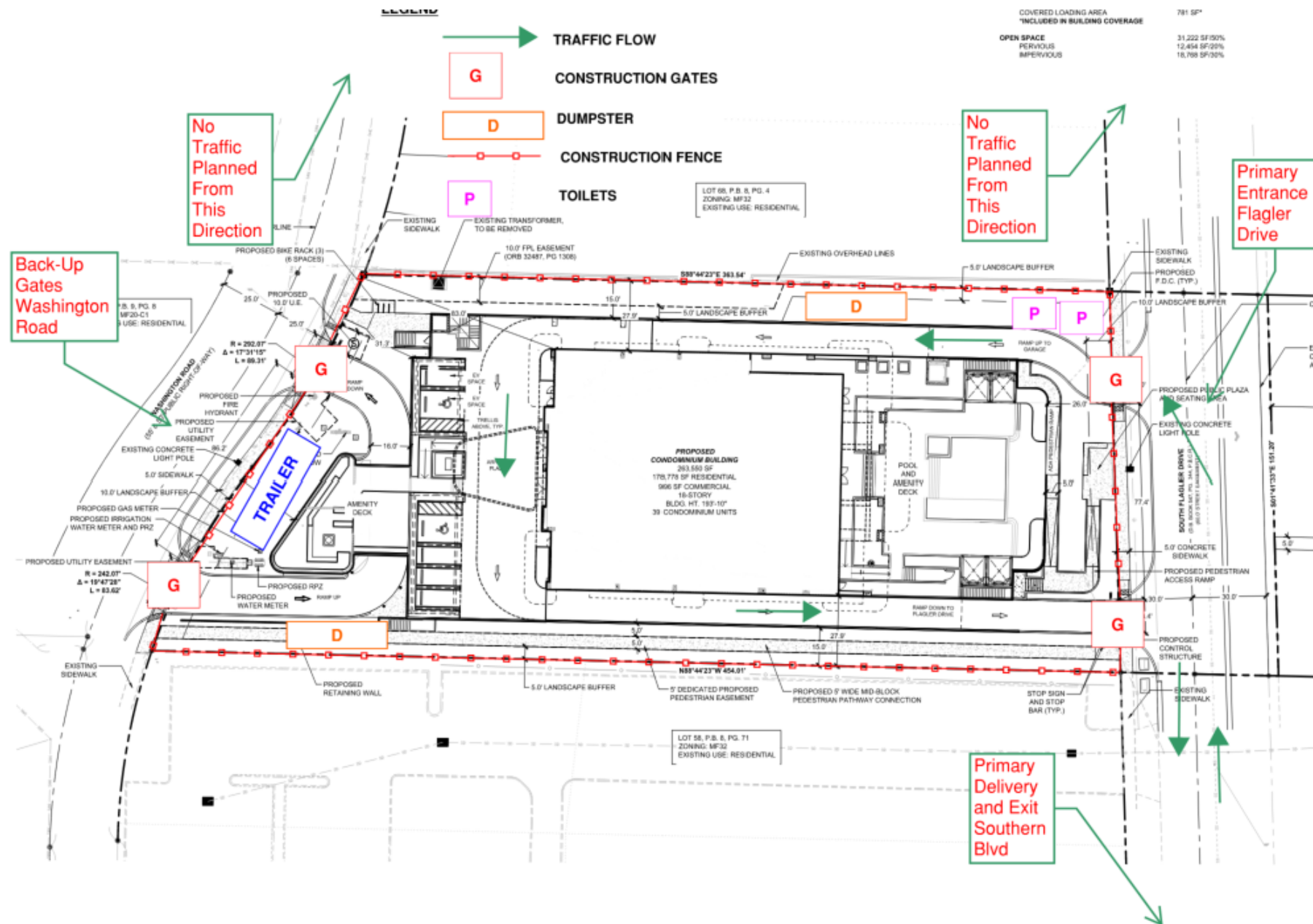
Construction Site Logistics Plan

Flagler House Project Location

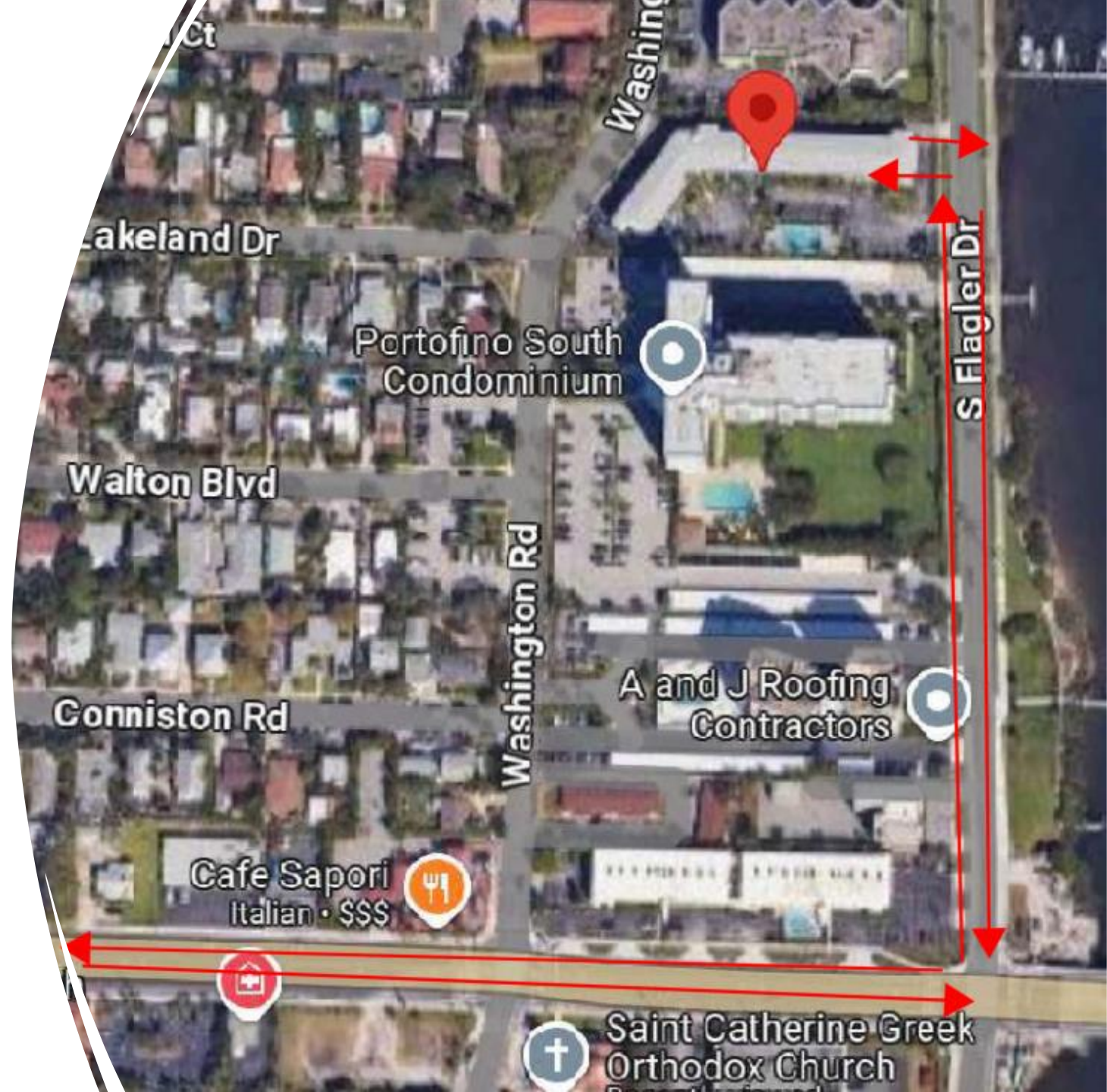


Project Location





Flagler House Delivery Route



Flagler House Construction Parking Plan

- During the height of construction, we are anticipating 120 workers.
- To accommodate the required parking, we will be leasing off-site parking locations to shuttle workers to and from the project site.
- A licensed and insured shuttle bus would be used to transport workers to and from the site approximately 5 runs in the morning and 5 in the afternoon.
- No parking will be allowed in the neighborhood.



Flagler House Logistics Plan

Subcontractor Coordination

The logistics plan is communicated to all Subcontractors during the negotiation and award of Subcontract.

A pre-construction meeting is held with each Subcontractor two weeks prior to Subcontractor mobilization on site to review the site logistics including delivery traffic route and the parking plan.

The following Parking Violations are outlined as follows:

1st Offense - Warning Notice of Future Tow on Vehicle with a \$500 Fine to Subcontractor.

2nd Offense - Vehicle is towed with an additional \$1000 Fine to Subcontractor.

3rd Offense - Offender (Subcontractor Employee) is banned from the Project.



Flagler House

Coordination with our Neighbors

- Throughout the course of construction, we will offer important construction and logistics updates on the project's community website.
- These updates will include certain large deliveries, construction work that may impact traffic patterns, and construction milestone updates.
- A construction point of contact will be posted to the community website for integrated neighborhood outreach and coordination.
- The parking fines that are levied and collected throughout the course of project will be donated to a local community organization.

